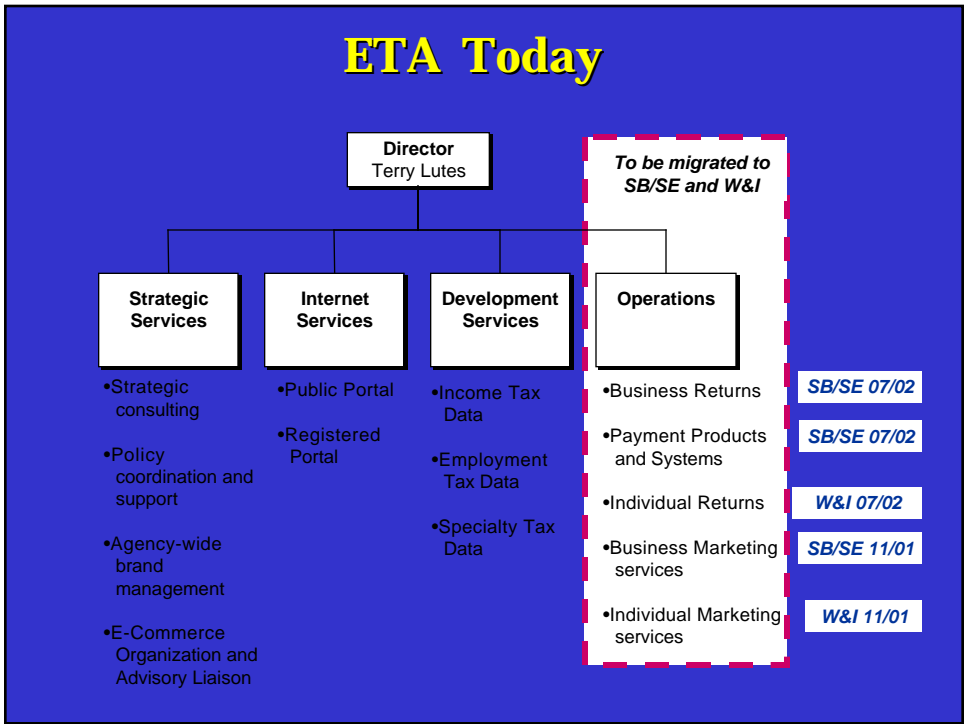


## Electronic Filing Update

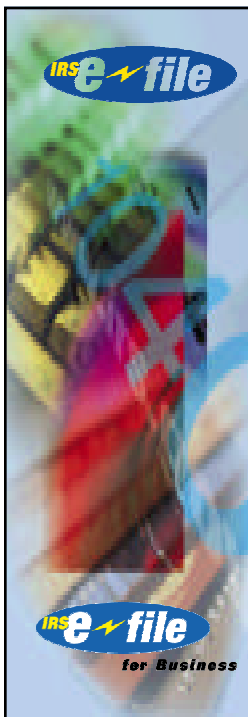
Mary Ellen Corridore  
Acting Director, ETA Operations





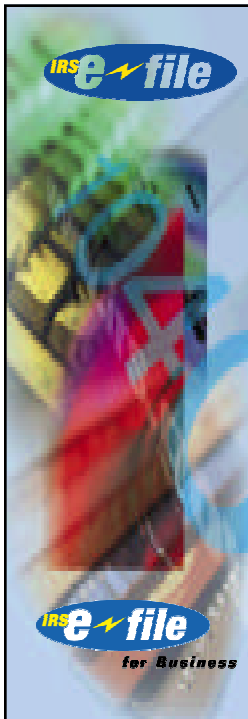
## 2002 Filing Season Highlights

- ◆ Return volumes
- ◆ Electronic signature
  - Practitioner PIN
  - Self-select PIN
  - On-line PIN



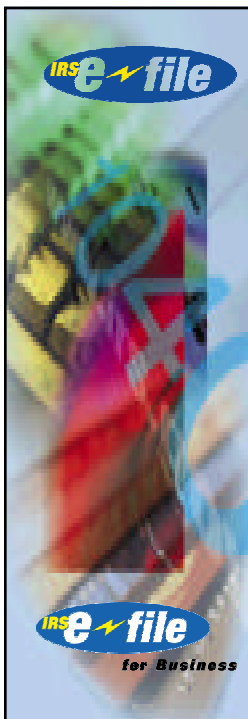
## Federal/State

- ◆ Federal/State *e-file* returns with foreign addresses
- ◆ State only
- ◆ One new state for TeleFile - Missouri



## Multiple Schedule D Transactions

- ◆ 2 new record types
  - STCGL (short term capital gain/loss)
  - LTCGL (long term capital gain/loss)
  - Up to 5,000 occurrences of each



## Decedent's Return

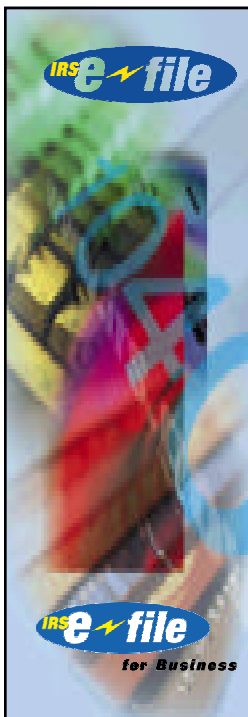
- ◆ Accepting returns as surviving spouse and from personal representative
- ◆ Not accepting decedent's returns from court appointed or certified representatives



**12 New Forms/Schedules**  
**(as of 4/5/02)**

- Form 970
- Form W-2C
- Form W-2GU
- Form 1042S
- Form 1099-G
- Form 1040-NR-EZ
- Form 1310
- Form 8594
- Form 8833
- Form 8840
- Form 8843
- Form 8880

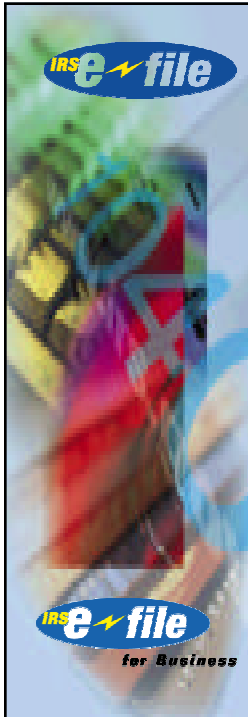
**IRS e file**  
*for Business*



**Publications**

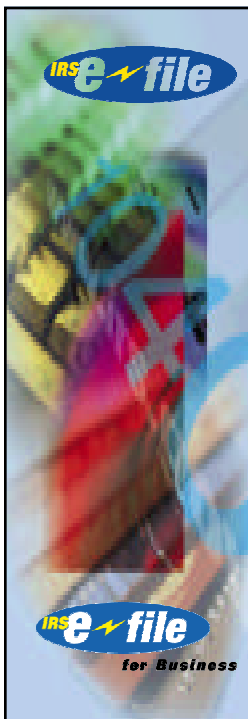
- ♦ **Publication 1346** should be available electronically the second week of August and in print the first week of September
- ♦ **Publication 1345A** should be available in December
- ♦ **Publication 1436 (PATs)** should be available in October

**IRS e file**  
*for Business*



## 1120 and 1120S e-file

- ◆ Currently, only paper filing is available
- ◆ 90+ forms and schedules
  - many are shared with other return types that are already electronically enabled
- ◆ New Architecture and XML Format
- ◆ Release Dates
  - January 2004 - 53 Forms
  - July 2004 - Remaining 39 Forms
  - January 2005 - Fed/State Options



## Questions??