



## Proposed Presentation Structure & Flow

- Presentation Will Portray Three Business Models Currently Utilized in Our Partnership With State Departments of Revenue
- Image Entry Will Introduce Current Technologies and Methodologies Available to Departments of Revenue
  - Present Models Currently Utilized by State Government to Accomplish Their Processes
  - Panel Will Be Available for Interactive Questioning After Brief Presentation/Overview of Each Model



Has a Fast Growing Economy  
Reduced Your  
Available Labor Pool?

Consider Selecting an  
Outsourcing Partner



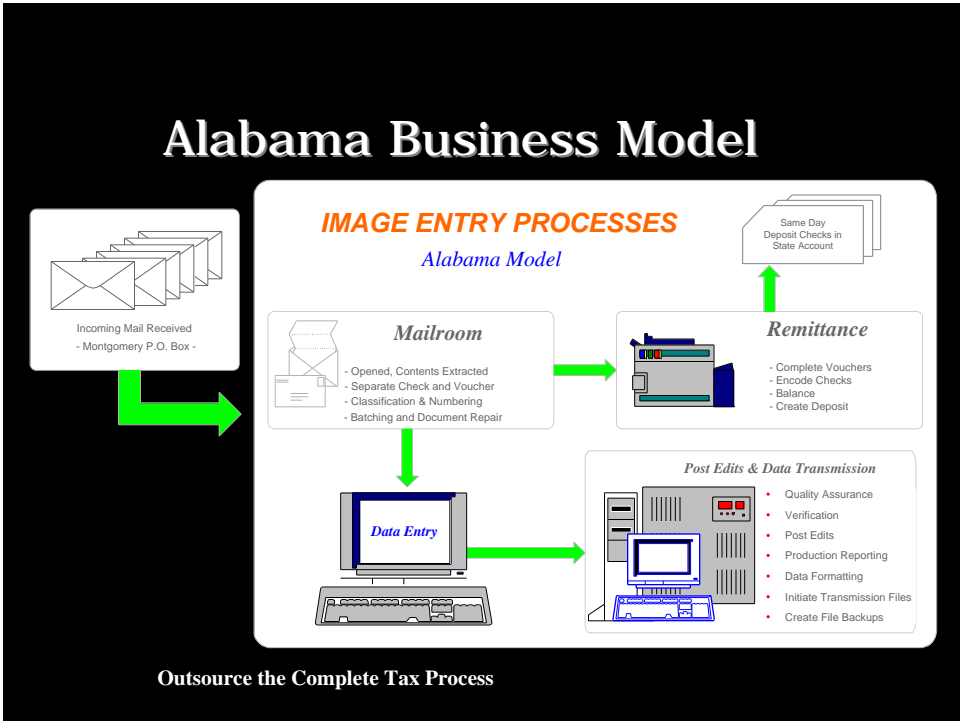
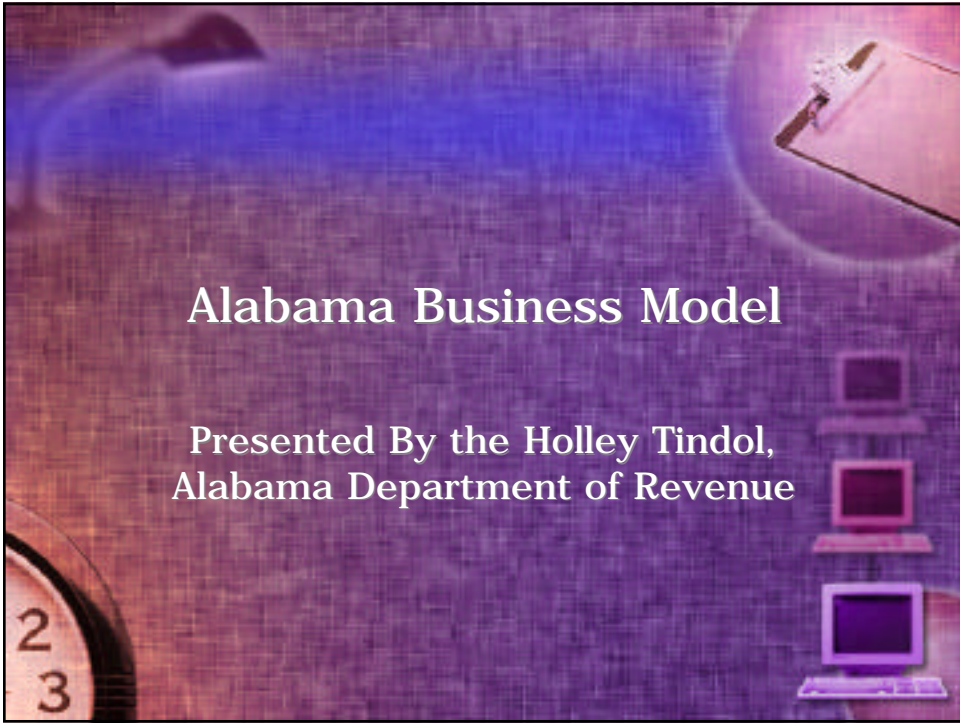
## Concentrate on Your Core Competency By Allowing Others to Perform Services For You

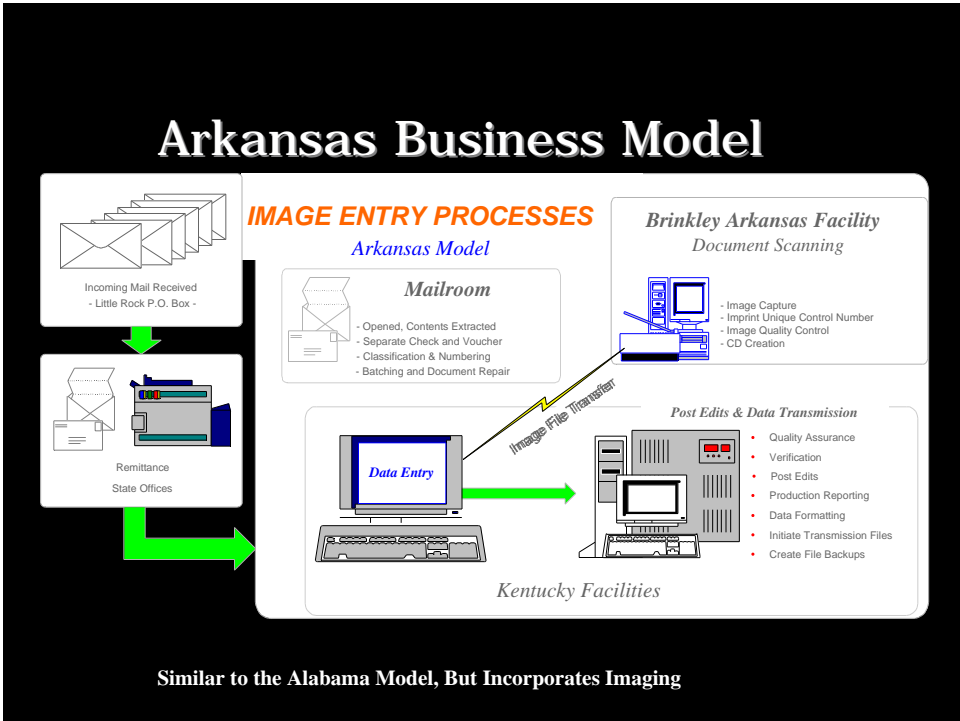
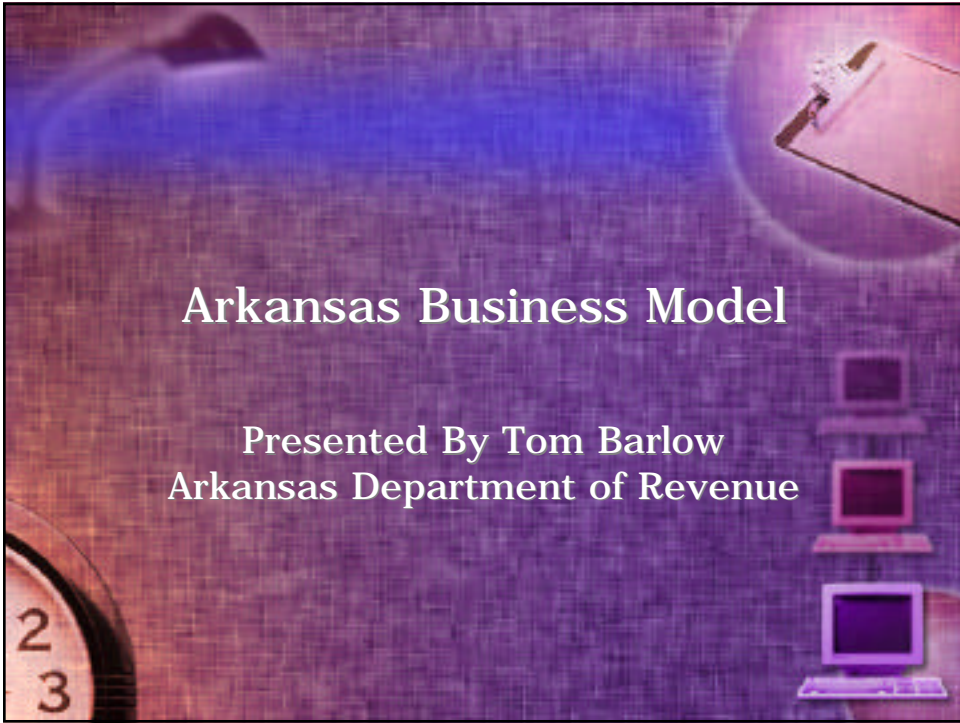
- **Data Collection and Image (Scanning) Conversion**
- **Data Entry from Remote Images**
- **Micrographics Services**
- **Document and/or Image Storage & Retrieval**
- **Database Development**
- **Document Indexing**
- **Document and Data Preparation**
- **Mailroom Services** (e.g., Opening, Batching, Document Preparation)
- **Remittance Processing**
- **Credit Card Processing**
- **Document Storage and Warehousing**
- **Lettershop/Laser Printing Capabilities**



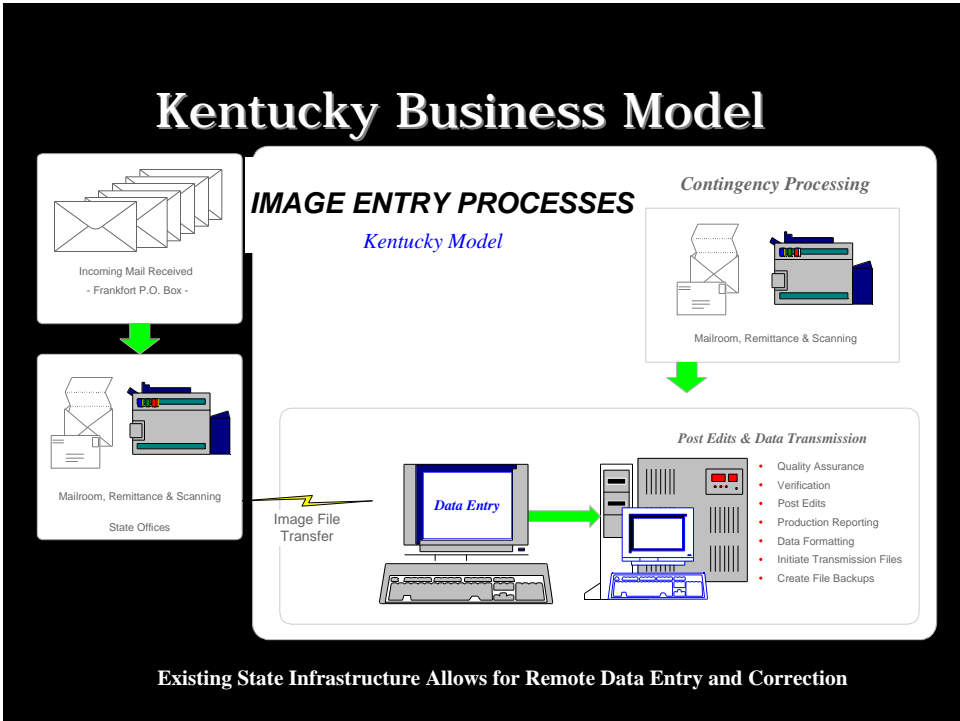
## Introduction of Business Models

- Allow Your Business Partner to Handle the Entire Tax Process—From Mailroom Forward
- Allow Your Business Partner to Handle Your Tax Documents By Implementing an Imaging Solution
- Utilize Your State Modernized Front-End and Allow Your Partner to Perform Remote Work (e.g., Scanning, Data Entry, Data Correction, Etc.)





Similar to the Alabama Model, But Incorporates Imaging



## Specific Advantages to Outsourcing

- **Availability of Experienced, Trained Staff**
- **Guaranteed Accuracy Levels Up to 99%+**
  - **Offer Performance Guarantees**
- **State-of-the-Art Data Conversion Equipment and Facilities**
- **Source Document Scanning/Imaging Capabilities**
- **Lower Direct Labor and Overhead Costs**
- **Disaster Recovery Plans Via Multiple Office Operations**