

Giving Your Customers the Ability to Pull Their Own Data

Don Gutmann
Revenue Analysis Program Manager
Washington Department of Revenue

Federation of Tax Administrators
Revenue Estimating and Tax Research Conference
September 18, 2007



Some Statistics

- In 2000 - 17% of staff time was spent completing data requests – represents almost 3 FTE's
- In 2007 – 8% of staff time was spent completing data requests
- A savings of 1.5 FTE's

Department of Revenue - Microsoft Internet Explorer

File Edit View Favorites Tools Help

Address http://dor.wa.gov/content/home/

ABOUT US | CONTACT US | QUESTIONS & ANSWERS | TEXT VERSION | PRINTER FRIENDLY

Department of Revenue
Washington State

"Working together to fund Washington's future"

Home

- File & pay taxes
- Doing business
- Find taxes & rates
- Workshops & education
- Get a form or publication
- Find a law or rule

Take a quick survey

I need to...

- File my taxes online
- Find a sales tax rate (GIS)
- Look up a business (BRD)

Quick clicks

- Search for unclaimed property
- Get statistics and reports**
- The Newsroom
- Tax incentive programs: deferrals, exemptions, and credits
- Learn more about the change to destination-based sales tax and the national Streamlined Sales Tax agreement.
- Watch an online presentation about destination-based sales tax.

My account (Online Services)

Logon ID Logon

Password Register now
Forgot your login ID?
Forgot your password?
Benefits of online

e-file
Electronic Filing

Features

- Yakima office moves to new location
- 2007 Small Business Fair - One day you can't afford to miss!
- New guidelines in place for sellers of prepared food

http://dor.wa.gov/content/AboutUs/StatisticsAndReports/Default.aspx

Statistics & reports - Microsoft Internet Explorer

File Edit View Favorites Tools Help

Address http://dor.wa.gov/content/AboutUs/StatisticsAndReports/Default.aspx

ABOUT US | CONTACT US | QUESTIONS & ANSWERS | TEXT VERSION | PRINTER FRIENDLY

Department of Revenue
Washington State

"Working together to fund Washington's future"

My Account: Login | Join

Home

- File & pay taxes
- Doing business
- Find taxes & rates
- Workshops & education
- Get a form or publication
- Find a law or rule

Take a quick survey

About us

Home / About us / Statistics & reports

What's new?

- Quarter 1, 2007 Quarterly Business Review
- Quarter 1, 2007 Taxable Retail Sales Comparison for All Cities and Unincorporated Counties

Statistical reports

- Comparative State & Local Taxes
- Comparison of County Assessor Statistics
- Detailed Tax Data by Industry and Tax Classification
- Local Sales & Use Tax Distributions
- Local Taxing District Levy Detail
- Property Tax Statistics
- Quarterly Business Reviews

Create a report

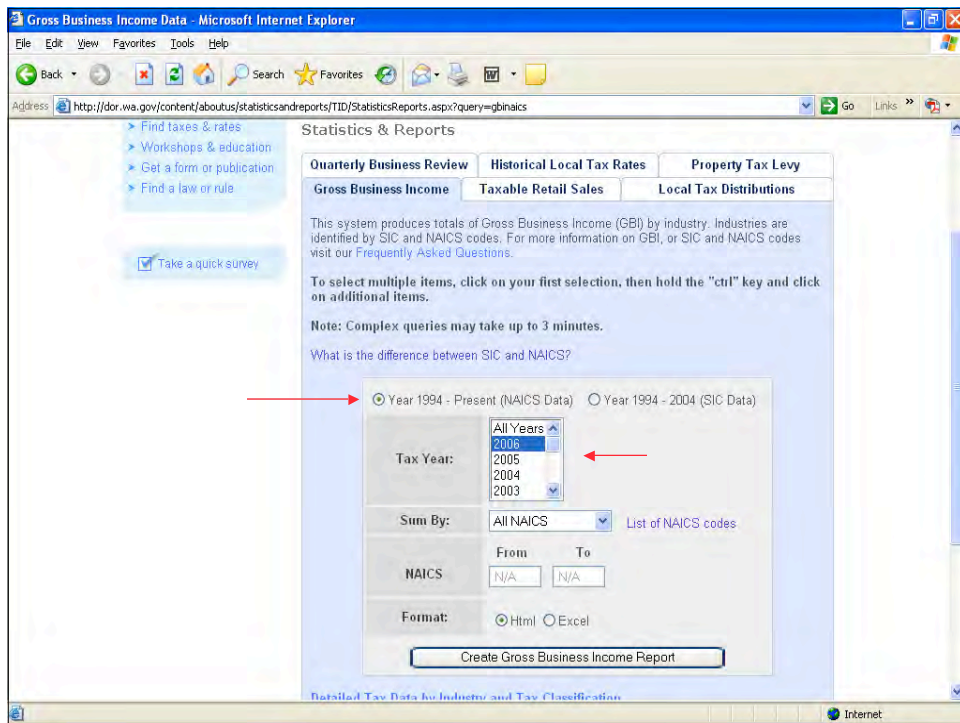
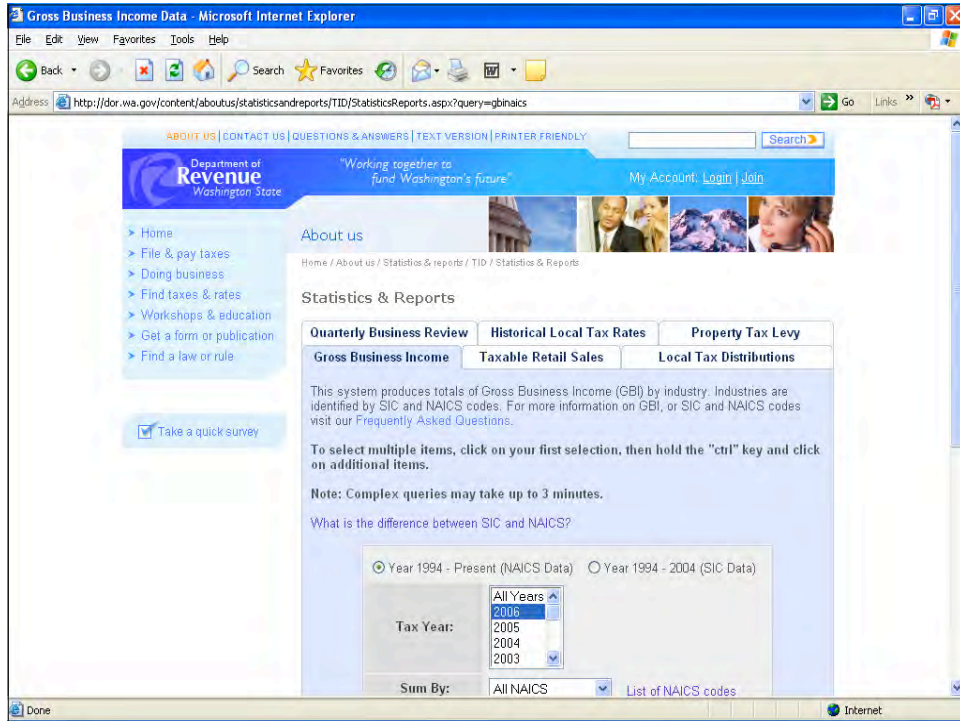
Use our **Create a Report** tool to create customized reports specific to your needs! With this tool you can get:

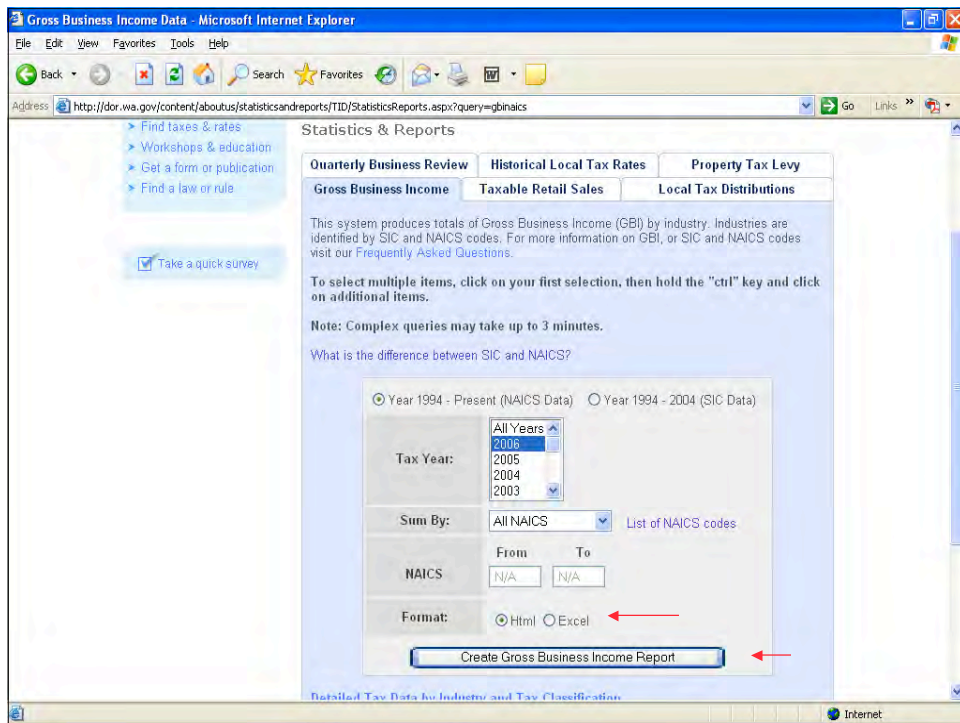
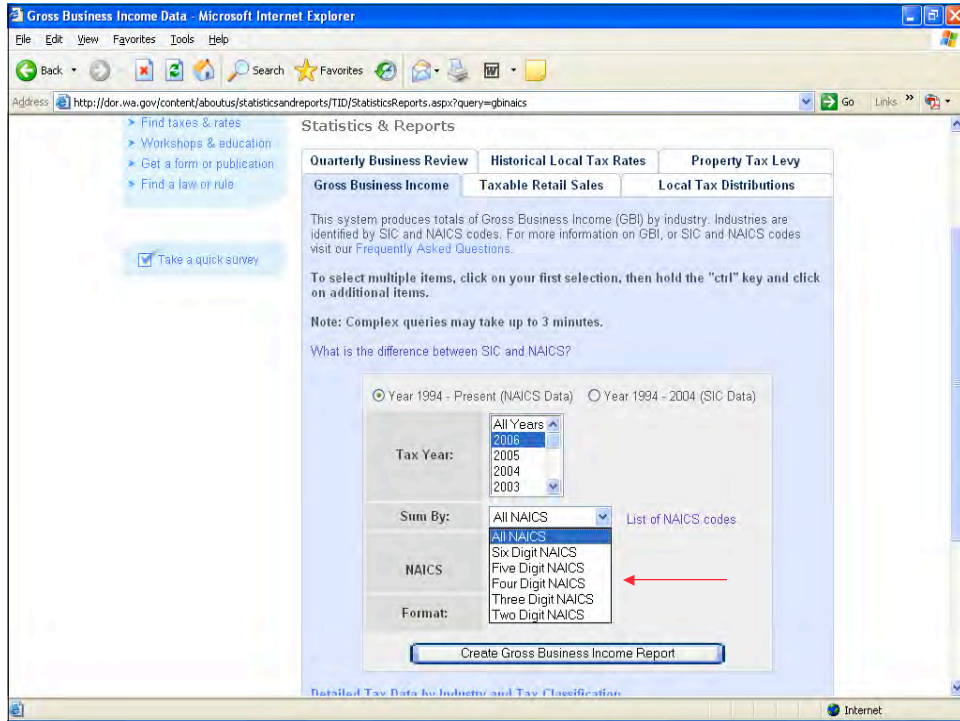
- State and local taxable retail sales
- Statewide gross business income
- Quarterly Business Reviews
- And much more...

Studies & research reports

- Benchmarking Administrative Tax Appeals
- Cigarette Tax Study 2007
- Compliance Study: 2006 2005 2003 1996
- Electricity Taxation Study for 1999
- High Technology R&D Tax Incentive Study: 2003 2000 1997
- Litter Tax Compliance: 2003 2005 2007
- Manufacturer's Machinery and Equipment Exemption for 2002

http://dor.wa.gov/content/aboutus/statisticsandreports/TID/StatisticsReports.aspx?query=gbinails





Gross Business Income Data - Microsoft Internet Explorer

Address: http://dor.wa.gov/content/aboutus/statisticsandreports/TID/resultsbiset.aspx?results=gb&Year=2006,&Code1=01&Code2=99&SumbY=n28&SicNaics=28Form

Year: 2006
NAICS Code: 01 - 99
Sum By: 2 digit

[Back to Search](#)
[Create Excel File](#)

D = Records not disclosable due to confidentiality requirements

Year	NAICS	Total Gross	Total Taxable	Total Tax Due	Units
2006	11	\$3,437,772,016	\$2,548,226,866	\$23,672,087	4,355
2006	21	\$802,975,360	\$962,243,136	\$10,333,217	194
2006	22	\$10,746,141,445	\$9,084,350,761	\$30,221,110	742
2006	23	\$41,744,669,457	\$35,754,248,565	\$1,494,259,046	47,200
2006	31	\$11,492,996,749	\$6,010,973,324	\$40,619,055	2,006
2006	32	\$42,665,412,895	\$33,024,850,361	\$243,269,939	2,795
2006	33	\$67,978,201,998	\$50,127,062,117	\$304,320,629	7,342
2006	42	\$106,999,029,690	\$74,811,911,182	\$675,990,224	18,903
2006	44	\$68,845,078,802	\$42,615,218,973	\$2,143,789,205	31,513
2006	45	\$37,647,924,054	\$22,105,466,331	\$1,174,067,164	35,177
2006	48	\$8,111,023,665	\$4,396,898,989	\$57,982,239	7,113
2006	49	\$975,075,077	\$772,287,804	\$8,122,266	1,236
2006	51	\$16,114,810,618	\$12,844,024,986	\$396,116,232	5,430
2006	52	\$30,100,302,152	\$15,922,097,384	\$257,426,867	8,768
2006	53	\$8,920,089,848	\$7,961,293,065	\$251,165,014	9,268
2006	54	\$32,204,215,154	\$23,746,203,125	\$413,866,774	44,230
2006	55	\$211,300,229	\$169,404,224	\$2,459,979	105
2006	56	\$15,496,469,444	\$12,817,028,600	\$254,212,770	23,709
2006	61	\$1,277,533,632	\$769,976,029	\$19,390,088	4,153
2006	62	\$24,248,820,544	\$19,870,408,034	\$306,869,709	18,848

Local Sales and Use Taxable Retail Sales - Microsoft Internet Explorer

Address: http://dor.wa.gov/content/aboutus/statisticsandreports/TID/statisticsreports.aspx?query=localsalesnaics

Home / About us / Statistics & reports / TID / Statistics & Reports

Statistics & Reports

Quarterly Business Review | Historical Local Tax Rates | Property Tax Levy

Gross Business Income | Taxable Retail Sales | Local Tax Distributions

Choose a Taxable Retail Sales Query:

Local Statewide

This data represents taxable retail sales as reported on the excise tax return for cities and counties in the State of Washington. For more information on taxable retail sales visit our [Frequently Asked Questions](#).

To select multiple items, click on your first selection, then hold the "ctrl" key and click on additional items.

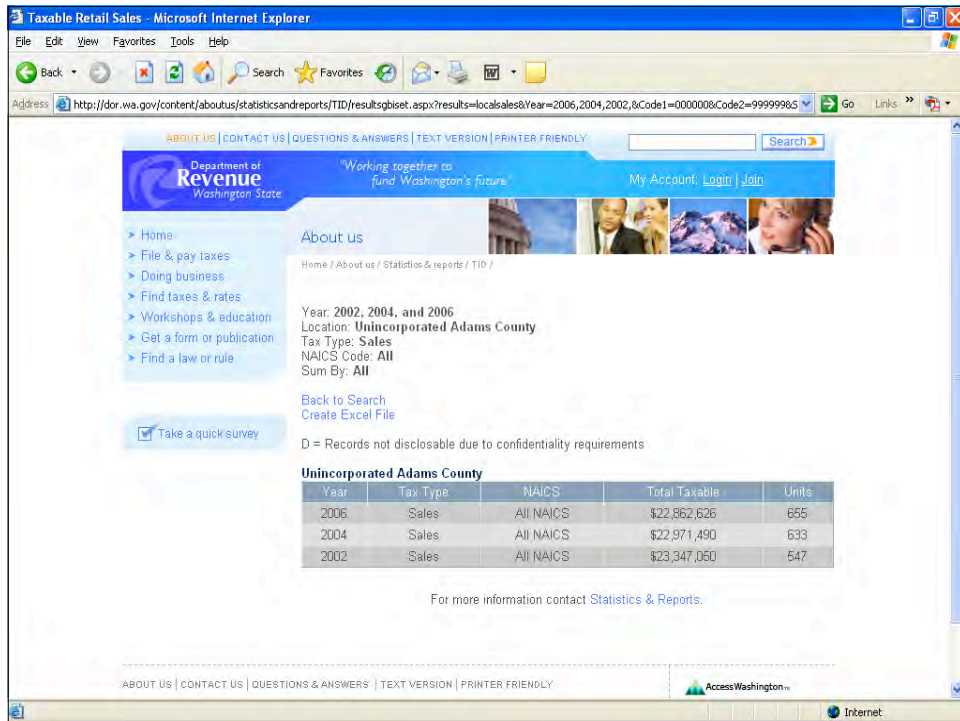
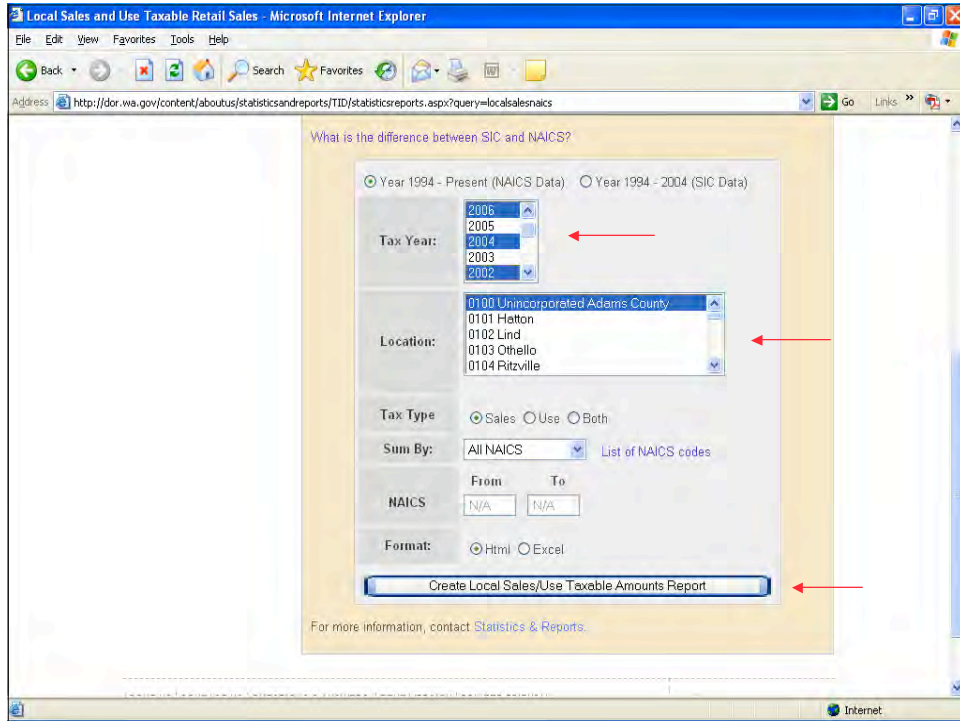
Note: Complex queries may take up to 3 minutes.

What is the difference between SIC and NAICS?

Year 1994 - Present (NAICS Data) Year 1994 - 2004 (SIC Data)

Tax Year: 2006, 2005, 2004, 2003

Location: 0100 Unincorporated Adams County, 0101 Hatton, 0102 Lind, 0103 Othello



Local Sales and Use Taxable Retail Sales - Microsoft Internet Explorer

Address: http://dor.wa.gov/content/aboutus/statisticsandreports/TID/statisticsreports.aspx?query=localsalesnaics

What is the difference between SIC and NAICS?

Year 1994 - Present (NAICS Data)
 Year 1994 - 2004 (SIC Data)

Tax Year: 2006, 2005, 2004, 2003, 2002

Location: 1726 Seattle, 1727 Skykomish, 1728 Snoqualmie, 1739 Sammamish, 1733 Seatac

Tax Type: Sales Use Both

Sum By: Two Digit NAICS (List of NAICS codes)

NAICS: From 50 To 60

Format: Html Excel

Create Local Sales/Use Taxable Amounts Report

For more information, contact [Statistics & Reports](#).

http://dor.wa.gov/content/aboutus/statisticsandreports/TID/StatsExcel.aspx - Microsoft Internet Explorer

Address: http://dor.wa.gov/content/aboutus/statisticsandreports/TID/StatsExcel.aspx

Local Taxable Retail Sales

1 Local Taxable Retail Sales
 2 Year: 2002, 2004, and 2006
 3 Location: Seattle, Seatac
 4 Tax Type: Sales
 5 NAICS Code: 50 - 60
 6 Sum By: 2 digit

Year	Tax Type	NAICS	Total Taxable	Units
Seattle				
2006	Sales	51	\$730,034,391	963
2006	Sales	52	\$155,177,320	254
2006	Sales	53	\$457,006,595	928
2006	Sales	54	\$470,446,068	2,845
2006	Sales	55	\$5,433,186	6
2006	Sales	56	\$422,484,639	2,796
2004	Sales	51	\$771,386,639	961
2004	Sales	52	\$149,650,462	285
2004	Sales	53	\$424,659,184	934
2004	Sales	54	\$364,656,880	2,719
2004	Sales	55	\$5,237,372	5
2004	Sales	56	\$351,378,633	2,622
2002	Sales	51	\$717,177,698	875
2002	Sales	52	\$173,244,935	267
2002	Sales	53	\$436,953,457	966
2002	Sales	54	\$391,233,951	2,587
2002	Sales	56	\$335,234,455	2,395
Seatac				
2006	Sales	51	\$24,696,370	148
2006	Sales	52	\$953,716	43
2006	Sales	53	\$194,204,779	141
2006	Sales	54	\$10,977,878	116

StatsExcel/

What's Next

- Tracking the data requests that the current system cannot handle.
- Meeting with local government officials to ask about their desired improvements.
- Will seek to have the changes to the system included in DOR's next Strategic Business Plan (Summer 2008).

Web Link

- <http://dor.wa.gov/content/aboutus/statisticsandreports/TID/StatisticsReports.aspx?query=gbaiaics>