

Determining Entity Relationships in Combating Refund Fraud

i2 Analyst's Notebook
Stacy Kardell-Lessard & Penny Feneis
Minnesota Department of Revenue, Individual Income Tax



What we look for

- **Fraudulent income tax refund claims**
 - Invalid wages, withholding, and other refundable credit claims
 - EIC equivalent
- **Collaborate on investigations with IRS CID as well as our counterparts in other states through our Suspicious Filer User Group**



Analysis Criteria

Common data we seek links between:

- Address
- Employer
- Relation
- Bank Account
- Filing Method
- Income Amount
- Credit Amounts
- Preparer



Past Analysis Methods

- Paper charts: overly time consuming and difficult to edit, disclosure issues
- Excel spreadsheets: difficult to show multiple links between suspects, employers, bank accounts, etc.
- Multiple print-outs: ineffective in storing related data in easy to locate groups

New Method

- **i2 Analyst's Notebook**
 - Demo CD
- **i2 Analyst's Notebook is used by over 2,000 organizations worldwide including:**
 - IRS - CID
 - FBI
 - Homeland Security
 - state and local law enforcement



President Bush reviewing i2 charts produced at the Financial Crimes Enforcement Network (FINCEN)



Analyst's Notebook

Visualize

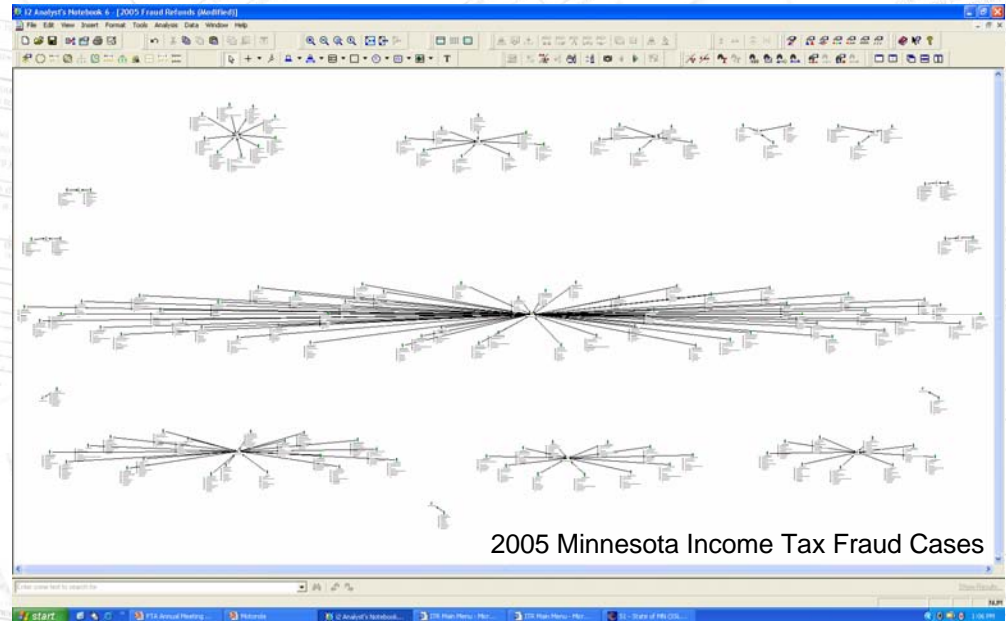
- Create visual timelines
- Expose hidden relationships

Analyze

- Identify Clusters
- Visual Search or Query
- Locate Paths Between entities
- Find and merge similar entities
- List Items
- Select multiple Chart Layouts
- Change Representation

Communicate

- Brief Superiors Quickly
- Freely distribute charts



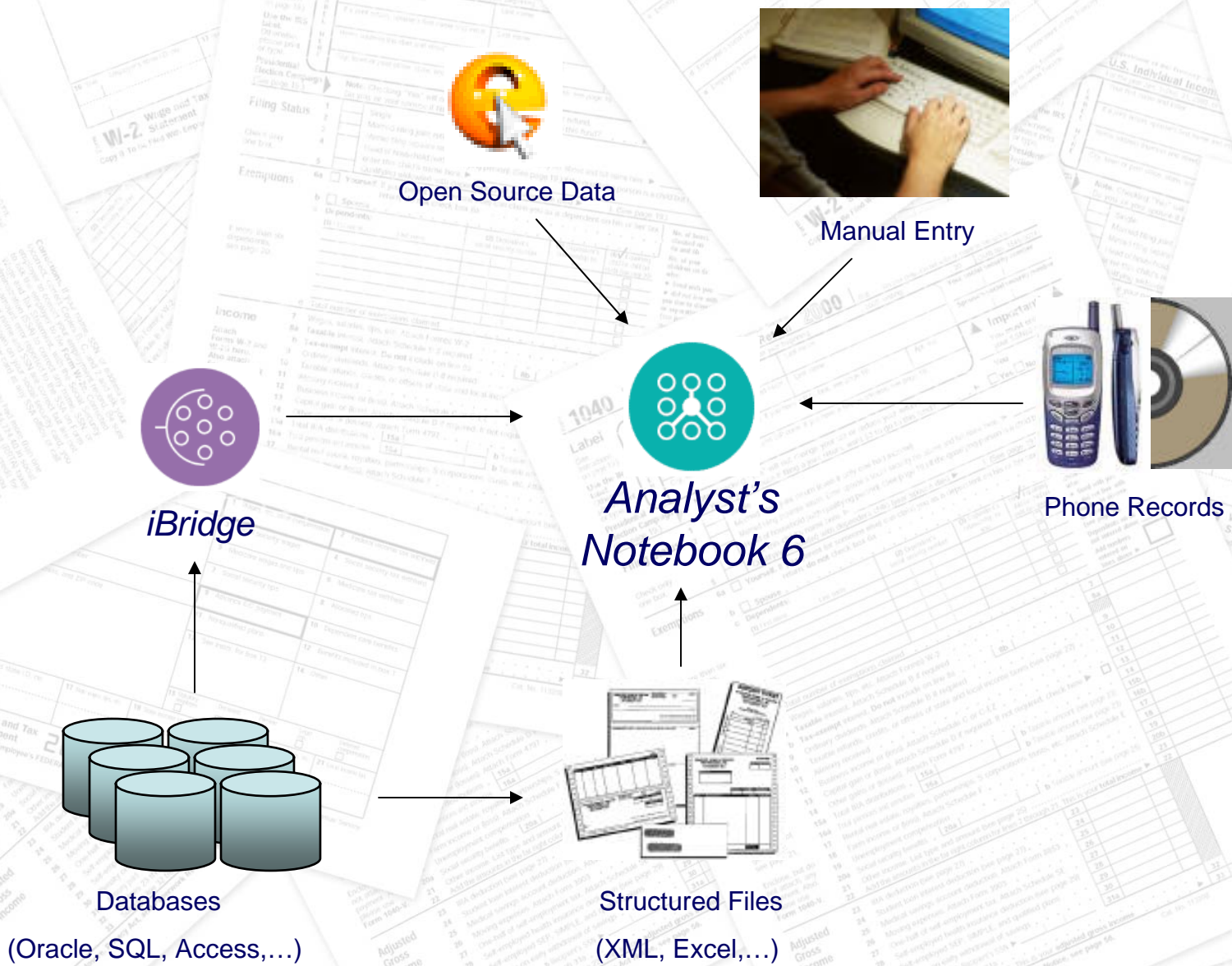
“i2 software has been used in every major FBI investigation since 1994”

Darryl Barton, FBI Retired

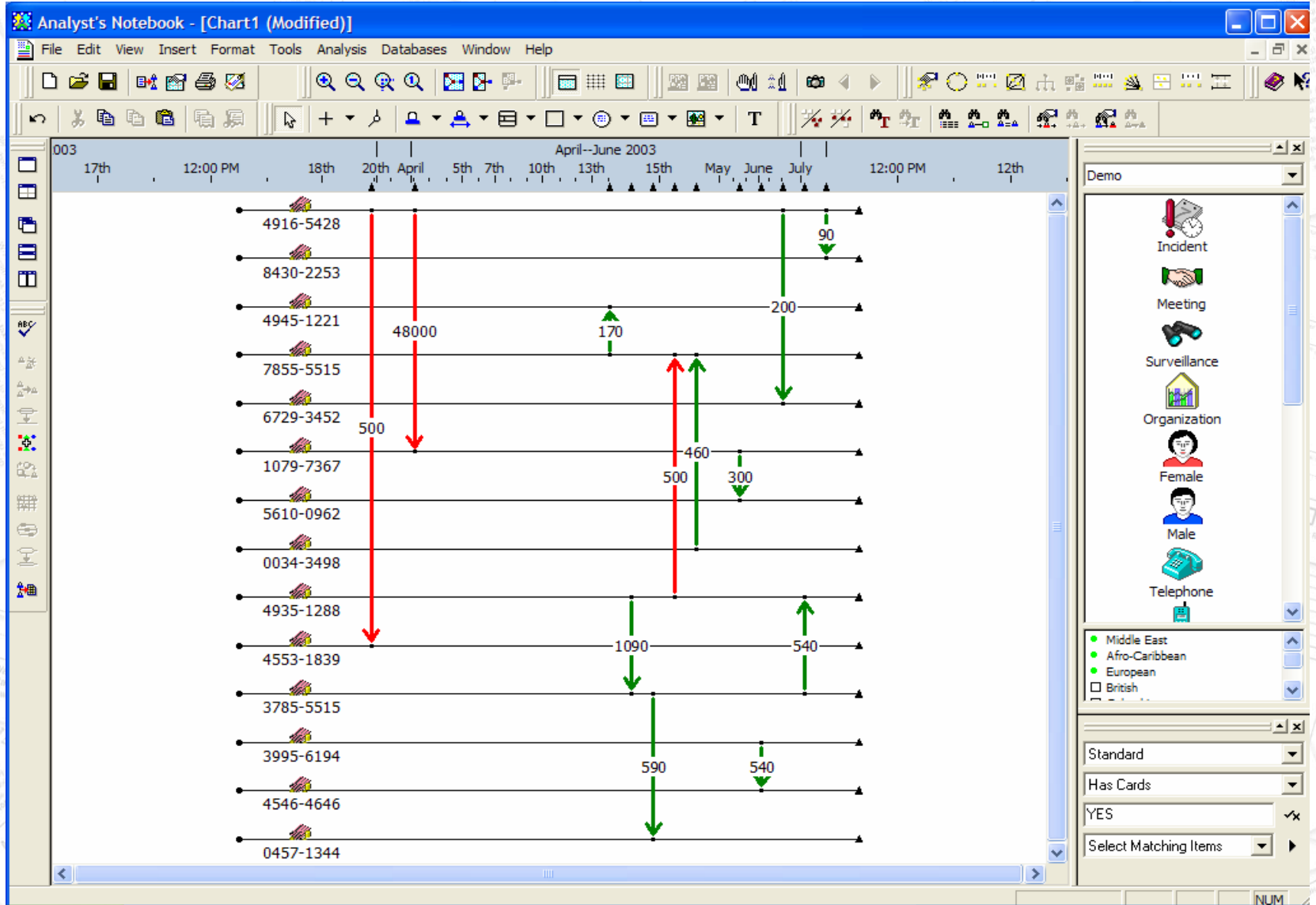
Abilities of i2 Analyst Notebook

- Import data already stored in Excel and manipulate the data to show all links between suspects
- Multiple layouts to present data in the most effective way
- Grade and evaluate data based on the reliability of the source
- Embed pictures, letters, and other records directly accessible from the chart

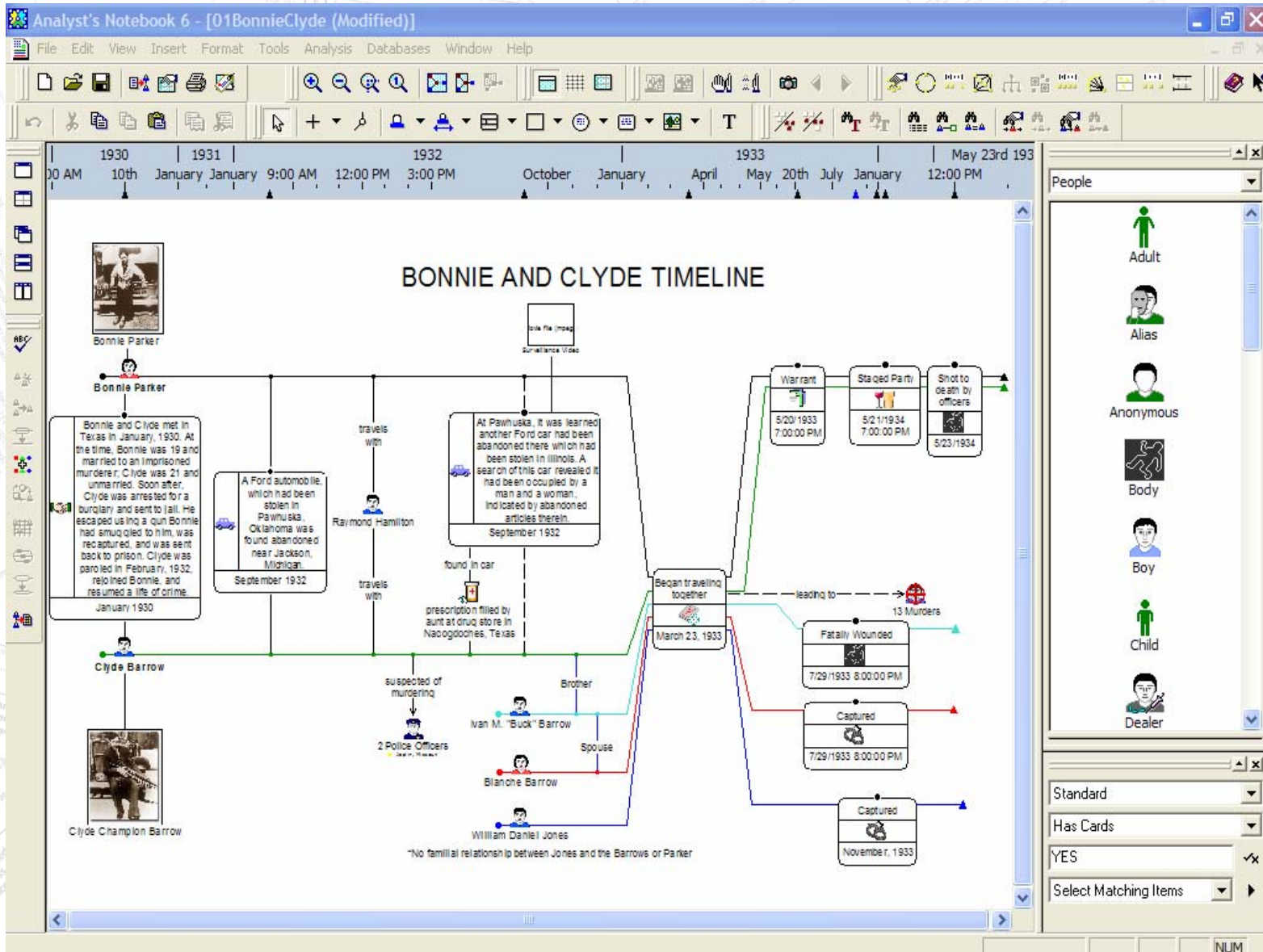
Data Source Files



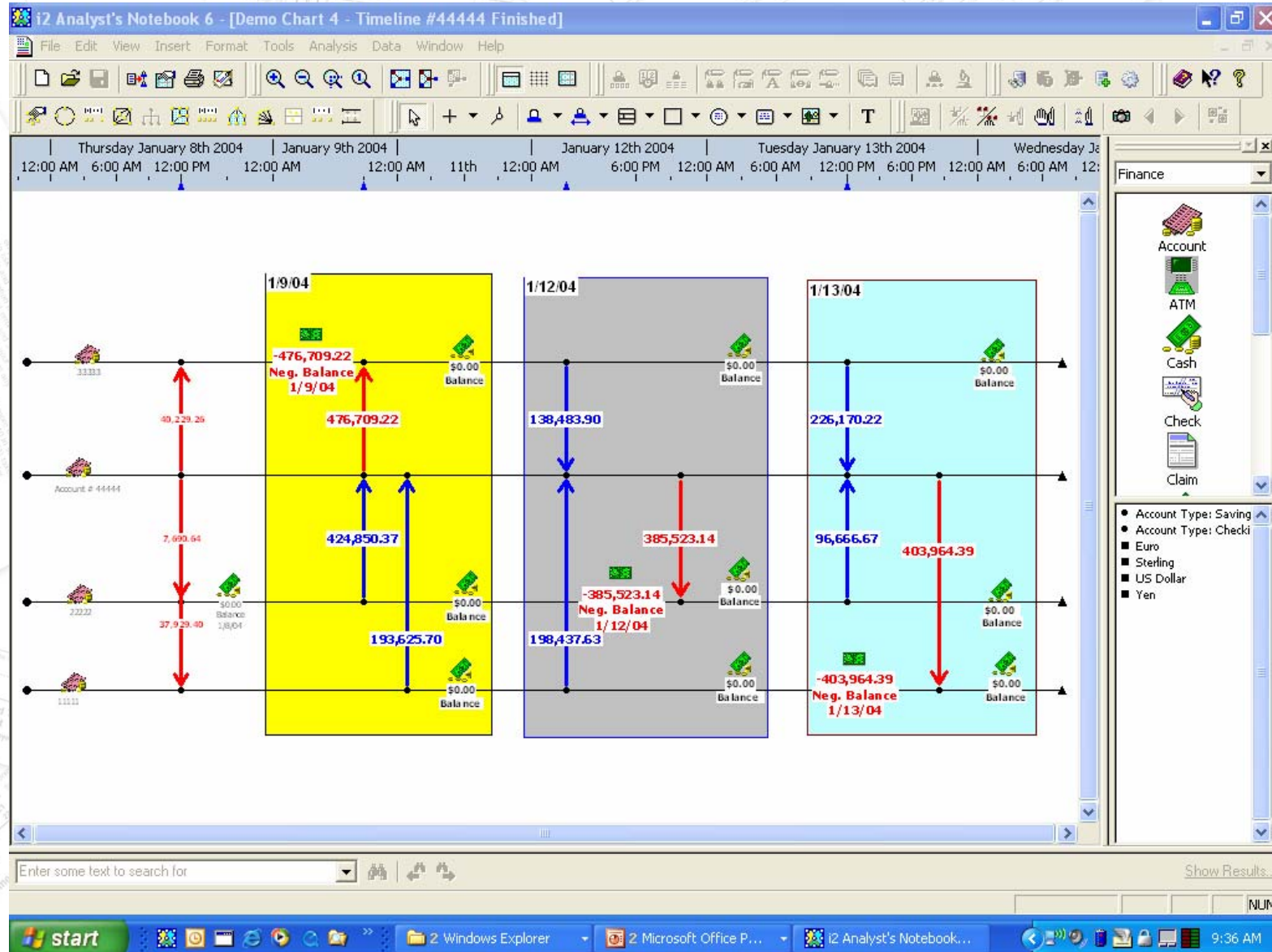
View & Analyze Financial Transactions



Create Robust Intelligence Products



Create Visuals to Support Findings



Find Matching Entities

Collects all entities that match each other into sets.

You can work with each set independently

Displays currently selected set

Find Matching Entities

Matched Sets:

- HARVARD'S LAW SCHOOL (3 Entities)
 - HARVARD UNIVERSITY SCHOOL OF LAW
 - HARVARD'S LAW SCHOOL
 - SCHOOL OF LAW, HARVARD
- KHELIL ABD AL RAHAMAN (3 Entities)
 - KHALIL AL RACHAD ABD AL RAHMAN
 - KHALIL RASHED MUHAMMAD ABD AL RAHMAN
 - KHELIL ABD AL RAHAMAN

Members of Selected Set:

HARVARD'S LAW SCHOOL

HARVARD UNIVERSITY SCHOOL OF LAW

SCHOOL OF LAW, HARVARD

Match 4

Match 5

Match 5

Smart Matching

Smart Matching

Smart Matching Against Selection

Label Matching

Previously Linked Matches

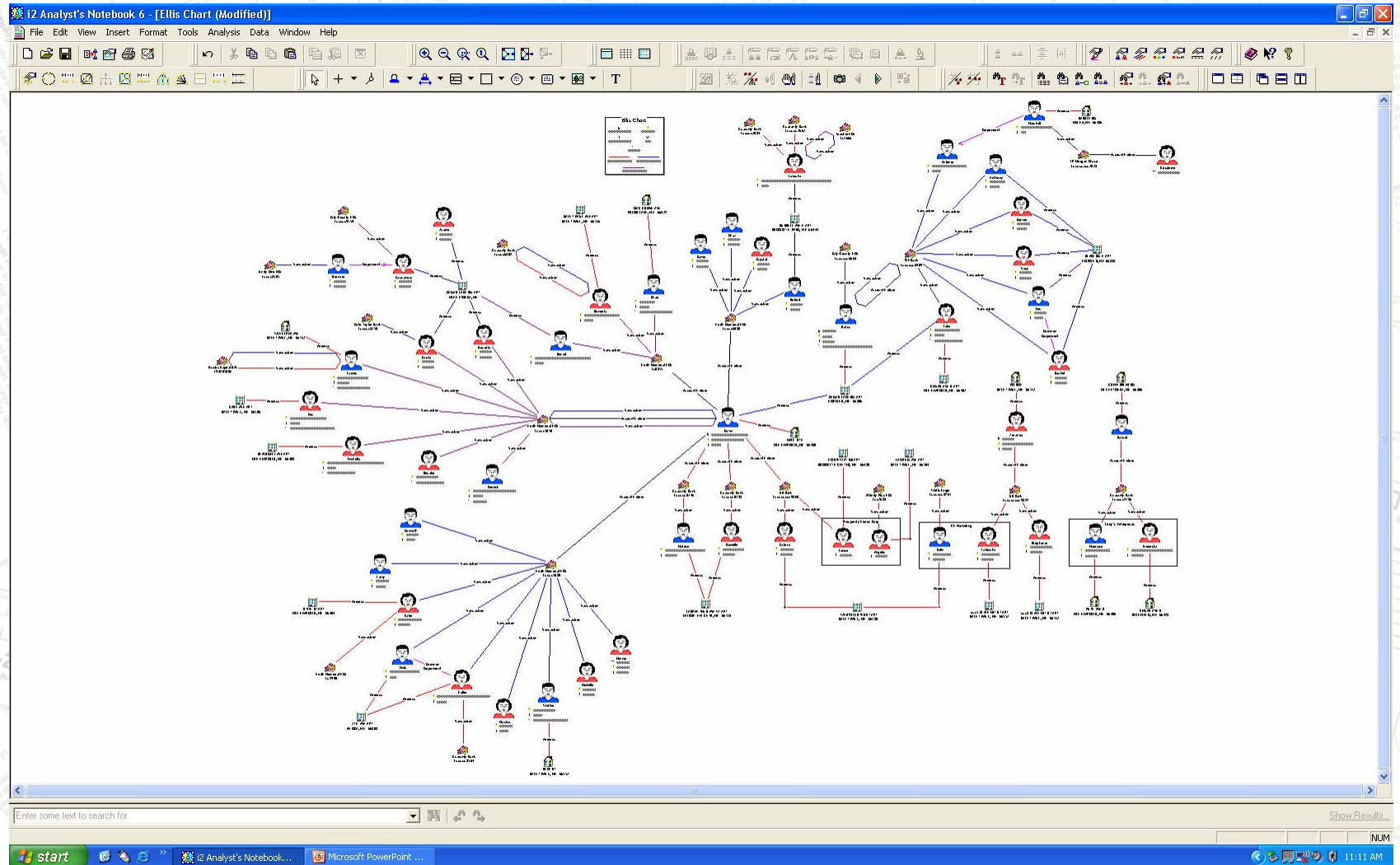
Merge Link Exclude

Setup... Find Help

Benefits of i2 Analyst Notebook

- Protects DOR disclosure practices
- Collect very detailed information and present in a concise manner understandable to multiple persons
- Ability to simplify our referral of cases to our Criminal Division
- Prevent repetition of investigative actions by making information accessible to all DOR employees involved in the investigation

Sample Case Chart



Public Records Data & AutoTrack XP

AutoTrack XP Main Menu - Microsoft Internet Explorer

File Edit View Favorites Tools Help

Back Forward Stop Home Search Favorites Refresh Print Mail News RSS Feeds

Address <https://atxp.choicepoint.com/at/mainmenu.asp> Go Links

Google Search 26 blocked Check AutoLink AutoFill Options

Adobe Y! Search Web Mail My Yahoo! Games Personals Music Finance Sign In

copernic Search Web Search Desktop: Files

AutoTrack Home Results Manager Feedback Session Total Online Support Permissible Use Reference: None Entered Sign Off [Cloaked] [Blind]

AutoTrackXP

from ChoicePoint

AutoTrackXP Online Support **Main Menu** Training & Support Resources

Please select from the following options

What's New
Click here to read about the latest enhancements
Monday, September 12, 2005

People Searches
Faces of the Nation
Locate Individuals Anywhere in the U.S.
Business Searches
Businesses of the Nation
Search for Corporations and Businesses
General Searches

Popular Searches
Assets
Property Ownership, Deed Transfers, Vehicles and Boats
Criminal Offenders & Court Records **NEW!**
Instant access to records from state Department of Corrections and Administrative Office of Courts
Driver Licenses
Driver License Searches

Internet

Partnerships

Analyst's Notebook has the capability to import search results directly from these public records search directories into a chart.



Decide with Confidence



LexisNexis™



ChoicePoint®

Disadvantages

- Each computer must have a separate license.
 - A Chart Reader can be installed on any number of computers free but the Chart Reader does not allow editing capabilities
 - DOR has remedied this issue for us by installing the software & license on a shared laptop, making the program portable and accessible by all fraud investigators
 - Network dongles





Chart Reader

- Allows ANB files to be published and distributed anywhere
- Permits sharing of analytical findings
- Enables opening, searching, and printing of charts
- **FREE**



Cost of i2 Analyst Notebook

- License & Software: \$4,299
- Annual Maintenance: \$759



Questions?

Contacts:

Stacy Kardell-Lessard

Minnesota DOR

Individual Income Tax

Fraud Detection

651-556-6640

stacy.kardell@state.mn.us

For purchasing information on i2 Analyst's Notebook or other i2 Inc. products:

Kevin A. Moore

Midwest/Northeast Account Manager

Ft. Loramie, OH

937-295-2600

kevin.moore@i2inc.com

www.i2inc.com

Toll Free: 888-546-5242

